

# ABACUS



ARCHITECTS, INC.

## THE LANDMARK SENIOR CONDOMINIUMS

*QUALITY YOU CAN  
COUNT ON*

**Sheboygan Senior Community**

Mike Basch  
920-458-2137

**Jos. Schmitt & Sons Const.**

Steve Schmitt  
920-457-4426

**Design Architect**

Robert L. Heimerl

**Project Manager**

Kurt Davis

**Project Data**

- New 4 story, 70 unit senior condominium building
- 160,000 SQ. FT.
- Bid: \$13.25 Million
- \$ 83 / S.F.
- Completed: Spring 2008

**Project Delivery**

- Design/Build

**ABACUS ARCHITECTS INC.**

1135A MICHIGAN AVENUE  
SHEBOYGAN, WISCONSIN

Phone: 920-452-4444

Fax: 920-452-9198

[www.abacusarchitects.net](http://www.abacusarchitects.net)

Architectural & Civil Engineering  
Services

**OUR MISSION**

*Working with clients and  
contractors as a team, efficiently  
and promptly providing the most  
creative product at a quality and  
cost our clients deserve.*

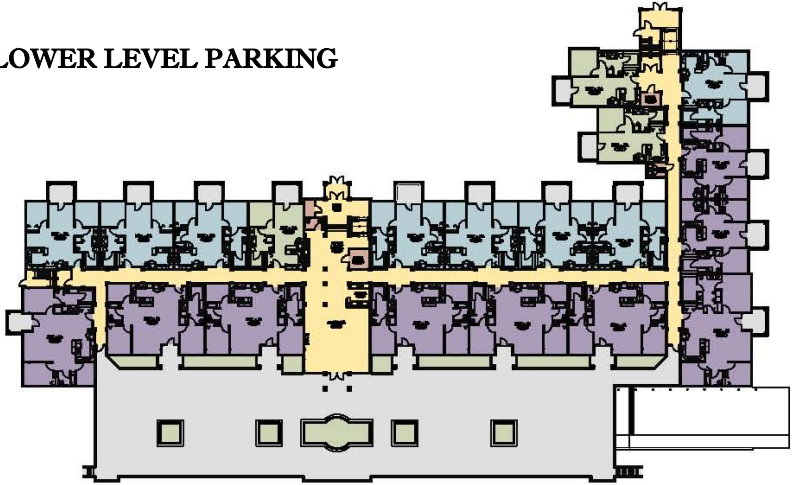


# ABACUS

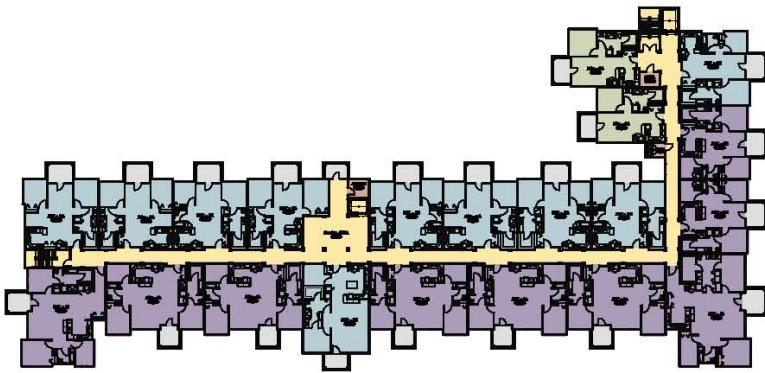


ARCHITECTS, INC.

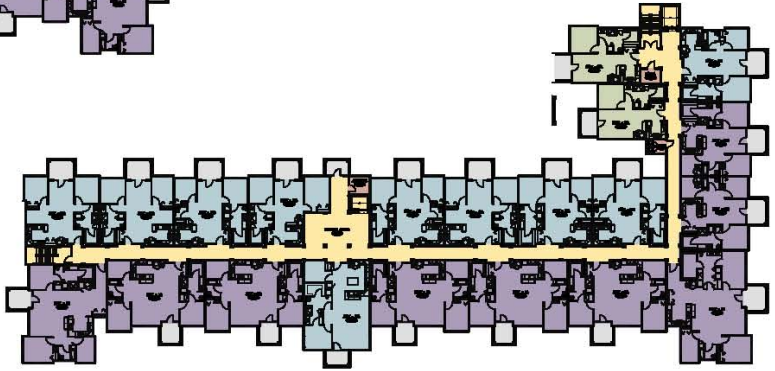
LOWER LEVEL PARKING



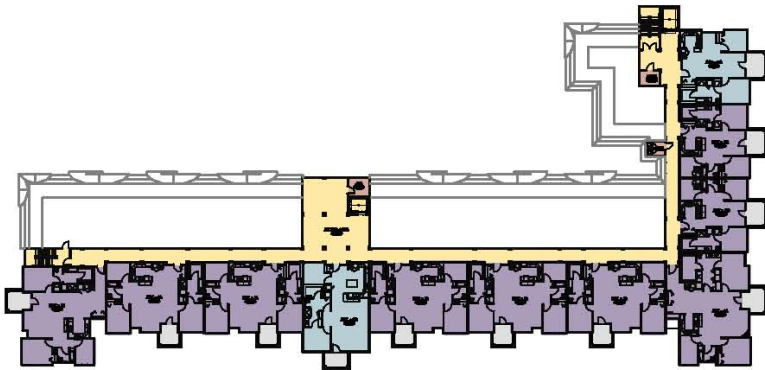
FIRST FLOOR PLAN



SECOND FLOOR PLAN



THIRD FLOOR PLAN



FOURTH FLOOR PLAN

LANDMARK SQUARE—SHEBOYGAN, WISCONSIN